



## Rubber Sleeve Pipe Clamps Hangers Split 90 Degree

Our Product Introduction

for more products please visit us on [channel-fittings.com](http://channel-fittings.com)

### Basic Information

- Place of Origin: Jiangsu, China
- Brand Name: HENG TONG
- Certification: ISO9001
- Model Number: PCH-015
- Minimum Order Quantity: 500 pieces
- Price: \$0.68/pieces 500-4999 pieces
- Packaging Details: packed in cartons

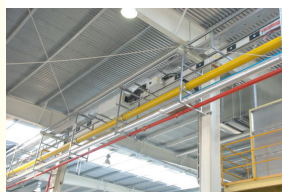


### Product Specification

- Measurement System: INCH, Metric
- Material: Metal
- Standard Or Nonstandard: Standard
- Usage: Pipe Clamp
- Structure: Purlin Clamp
- Finish: Galvanized
- MOQ: 2000pcs
- Application: Pipe Connection
- Packing: Carton Packing
- Size: TUBE SIZE 21-24
- Name: PCH-015
- Band Width: 20MM
- Highlight: rubber sleeve pipe clamp, rubber pipe hangers, pipe clamp rubber lined



### More Images



## Product Description

### High Quality Rubber Liner Split Pipe Clamp PCH-015

#### Product Description

<b>Product Name</b>	Galvanized Purlin Clmap with M10 nut
<b>Material</b>	stainless steel carbon steel
<b>Certification</b>	ISO9001
<b>Finish</b>	PG, EG, HDG, POWDER COATING
<b>MOQ</b>	500PCS
<b>PORT</b>	Shanghai , Ningbo...etc
<b>Payment</b>	T/T, L/C....etc
<b>Used</b>	building industry

#### Products Show





Application



Our Company



Factory

Our Factory



Workshop

Our Workshop



## Warehouse

Our Warehouse



## Team

Our Team

## Packing & Delivery

Packing Details : Packing, solid bicycle saddle, 50pcs/carton

Delivery Details : 3-30 days after order of Solid bicycle tire tubes



1. Special logistics packaging



2. Suitable carton size



3. Shock bubble film





4. Professional placement



5. Professional shock



6. Complete package

## New Factory



## FAQ

### Q: Are you trading company or manufacturer ?

A: We are factory.

### Q: How long is your delivery time?

A: Generally it is 5-10 days if the goods are in stock. or it is 15-20 days if the goods are not in stock, it is according to quantity.

### Q: Do you provide samples ? is it free or extra ?

A: Yes, we could offer the sample for free charge but do not pay the cost of freight.

### Q: What is your terms of payment ?

A: Payment<=1000USD, 100% in advance. Payment>=1000USD, 30% T/T in advance ,balance before shipment.

If you have another question, pls feel free to contact us as below:

## Contact Information

**Company Name:** WUXI HENGTONG METAL FRAMING SYSTEM CO., LTD

**Address:** No 19 Nanhu Road, Nanquan Town, 214128 Wuxi City, jiangsu Province, China.

**Contact Person:** Tracy

**TEL:** 0086 510 68783391

**FAX:** 0086 510 68783390

**Mob:** 0086 13812286938

**Skype:** tracyfeng719

**Website:** www.htstrut.com



**Wuxi Hengtong Metal Framing System Co., Ltd.**



+86 15251535252



elinglu@htstrut.com



channel-fittings.com

No 6 East Dingxiang Road Hudai Industry Zone Wuxi City 214161 China